

SENATOR

**DONNA  
MERCADO  
KIM**

PROUDLY SERVING DISTRICT 14



KAPALAMA · 'ĀLEWA · KALIHI · KALIHI VALLEY · FT. SHAFTER · MOANALUA GARDENS & VALLEY · RED HILL

## KALIHI-VALLEY COMMUNITY REPORT

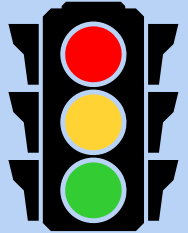
### Aloha Neighbors & Friends!

With a month left before the legislative session ends on May 2, House and Senate bills are moving through key votes as conference committees are hard at work finalizing agreements. The pace is picking up as we head into the final stretch. We also take time to reflect and celebrate this season of hope and renewal. Wishing you and your family a joyful Easter!

**Mahalo,**

### Honolulu Red-Light Cameras to Enforce Speeding Fines from April 29

1. Vineyard Boulevard and Pālama Street
2. Vineyard Boulevard and Liliha Street
3. Vineyard Boulevard and Nu'uau Street
4. Vineyard Boulevard and Pali Highway
5. North School Street and Pali Highway
6. North School Street and Likelike Highway
7. Ward Avenue and South King Street
8. Kapi'olani Boulevard and Kamake'e Street
9. South Beretania Street and Pi'ikoi Street
10. McCully Street and Algaroba Street



### Ahihi Street Bridge Closure

After safety concerns about the Ahihi Footbridge were brought to the City's attention by Councilmember Dos Santos-Tam and Senator Kim, they're happy to see that the necessary precautions are being taken. The bridge is closed indefinitely due to significant damage to its metal railings. City urges the public to avoid the bridge, as it is now closed to all pedestrians and bicyclists. For students and parents of Kalihi Uka Elementary School, please plan an alternate route for commuting to and from school.

For questions, please contact the Department of Design and Construction at (808) 768-8400.

### Where to Report Tree Trimming and Vegetation Issues

Overgrown trees, especially those leaning on electrical wires, greatly increases the risk of island fires. It is important to be proactive and report any overgrown vegetation to Hawaiian Electric.

#### HAWAIIAN ELECTRIC WEBSITE

Visit [www.hawaiianelectric.com/](http://www.hawaiianelectric.com/) ► Safety & Outages ► Tree Trimming Safety ► Request a Trimming Inspection

#### CONTACT HECO DIRECTLY

Send reports to [TrimRequest@hawaiianelectric.com](mailto:TrimRequest@hawaiianelectric.com) or contact (808) 543-7836

#### FACEBOOK

You can reach out via Facebook, at Hawaiian Electric, and your inquiries will be routed to the proper area



### Congratulations to Kamehameha Schools Kapālama Wrestling Team

Congratulations to the Kamehameha Schools Kapālama Wrestling Team on their incredible achievements! The boys' team secured their second consecutive state championship, while the girls' team celebrated three individual champions—seniors Rylie Nishida and Jax Realin, and freshman Auriana Wakinekona.

Congratulations to these champions and their coaches. It was your commitment and effort that has brought great pride to your school.



Hawaii State Capitol, Room 218  
415 S. Beretania St.  
Honolulu, HI 96813

Phone: (808) 587-7200

Email: [senkim@capitol.hawaii.gov](mailto:senkim@capitol.hawaii.gov)

Website: [www.capitol.hawaii.gov](http://www.capitol.hawaii.gov)



Facebook: [SenatorDonnaMercadoKim](https://www.facebook.com/SenatorDonnaMercadoKim)



Instagram: [@DonnaMercadoKim14](https://www.instagram.com/DonnaMercadoKim14)

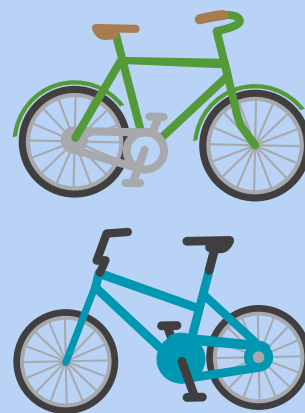
**April 9, 2025**

# Community Events and Updates

## Donate Bikes for the 2025 Kalihi Ahupua'a Ride

**When:** Wednesdays, Fridays, and Saturdays from 11:00am to 5:00pm  
**Where:** KVICE, 1638 Kamehameha IV Rd, Honolulu, HI 96819  
**Contact:** (808) 843-1545

Have old, broken, or unused bikes? Kokua Kalihi Valley welcomes bike donations that will be given to local youth for the upcoming Ahupua'a Ride. The Kalihi Valley Instructional Bike Exchange (KVICE) provides Kalihi youth a space to fix and maintain bikes. Empowering them in their abilities and growing confidence.



## Digital Literacy Class

**When:** April 12 and April 19 from 10:00 am to 11:30 am  
**Where:** Kalihi-Palama Public Library  
**Contact:** 808 832-3466

Attend a free session on various topics related to digital literacy. On April 12<sup>th</sup>, learn how to get online including, using the address bar, navigating web browsers, and web navigation. On April 19<sup>th</sup>, gain experience in using email to connect with family and friends including, how to setup email accounts, write and send emails, email navigation, and how to attach files and features. Registration is required. To sign up, call the Kalihi-Palama Public Library at (808) 832-3466



## Keiki Storytime

**When:** April 15 and April 22 from 9:15 am to 10:30 am  
**Where:** Kalihi-Palama Public Library  
**Contact:** 808 832-3466

Join your local library for Keiki Storytime. Keiki will enjoy a few stories, rhymes or songs, and do a craft or creative activity. Materials will be provided. Program is best suited for children ages 3 - 5 years old, but families are welcome. Children must be accompanied by an adult caregiver.



## Support Your Local Library

Over the past year, I've used my community report to highlight and promote local library events. As a legislator with a strong focus on education, I recognize that libraries provide essential resources for both students and the broader community.

Libraries are much more than just a place for books; they are vibrant hubs for community engagement. From hosting bonsai shows to offering space for meetup groups, libraries foster connections and bring people together in meaningful ways.



**April 9, 2025**