

FROM THE OFFICE OF

# SENATOR STANLEY CHANG

East Honolulu Community Newsletter

June 2025



Senator Chang is happy to announce that \$1,702,000 in Capital Improvement Project (CIP) funding will be released to the Waikiki Aquarium.

The funding will go toward several renovation projects at the aquarium. These projects include:

- **Planning, design, construction, and equipment for replacing the exhibit gallery ceiling.** This work will allow for the planned installation of new electrical and water supplies, in addition to new speakers at the ceiling level.
- **Resurfacing the gallery flooring.** The existing gallery floor has undergone several modifications in different places within the aquarium over the past 70 years. The quality of concrete is of inconsistent quality. A comprehensive repair of damaged areas and installation of an epoxy coating will be necessary to achieve a durable floor covering that will last at least 20 years.

- **Upgrading of the electrical system.** This renovation will address potential Health and Safety issues related to outdated wiring. It will also allow for additional capacity and modernize the electrical management system.

Andrew Rossiter, Ph.D, director of the Waikiki Aquarium, said, "the CIP funding allow us to make improvements to infrastructure some of which has not been updated in 70 years." Senator Chang said, "the CIP funding is an exciting opportunity to for the Waikiki Aquarium to modernize its infrastructure to enhance the experience of visitors."

The University of Hawai'i currently manages the Waikiki Aquarium. The aquarium is the second-oldest public aquarium in the United States. The mission of the aquarium is to "inspire and promote understanding, appreciation, and conservation of Pacific marine life. For more information, please visit [waikikiaquarium.org](http://waikikiaquarium.org).

► **CALL US**

808-586-8420

► **EMAIL US**

Stanley Chang  
Senator, District 9 (D)  
[senchang@capitol.hawaii.gov](mailto:senchang@capitol.hawaii.gov)

► **HANDY CONTACTS**

State Pothole Hotline  
808-586-7852

City Pothole Hotline  
808-768-7777

State Homelessness  
[gov.homelessness@hawaii.gov](mailto:gov.homelessness@hawaii.gov)  
808-586-0193

City Homelessness  
[complaints@honolulu.gov](mailto:complaints@honolulu.gov)  
808-768-4381

Abandoned Vehicles  
808-733-2530

Building Permits  
808-768-8000

Poison Control  
800-222-1222

Trash Collection  
808-768-3200

Street Light Repair  
808-768-5300

Domestic Abuse  
Hotline  
800-799-7233

Public Assistance  
Information Line  
855-643-1643

## MOVING FORWARD



Image Credit: Hawai'i Department of Education

### \$964,000 Secured for Waikīkī Elementary School

Senator Chang is proud to announce that \$964,000 in Capital Improvement Project (CIP) funding will be released to Waikīkī Elementary School. The funds will be used to address ground settlement issues and for the construction of an additional playground.

Although the specific plans for construction have not yet been released, the ground and campus improvements will be critical components for the next phase of the elementary school grounds.

Ryan Kusuda, Principal at Waikīkī Elementary School, said, "the site improvements will contribute to the enhancement of our students' social-emotional and academic development." Senator Chang said, "this essential CIP funding is critical for our young students as it will be the first step toward enhancing the educational experience at Waikīkī Elementary."

The funding for this project was included in the final executive budget bill of 2025. Investments in school infrastructure, generally, promote the health, safety, and well-being of Hawai'i students. For more information, please contact the Office of Senator Stanley Chang at (808) 586-8422.

opportunity for students to have access to academic courses, enrichment, acceleration and/or remediation experiences.

Summer Learning offers several benefits for students. It provides students with the opportunity to catch up on coursework, stay on track for graduation, explore new subjects, and develop new skills. It also helps students build confidence, network with peers and professionals, and experience new learning environment.

Summer learning opportunities are being offered at most schools. Schools are designing programs that meet the needs of students at their local school. For more information, please visit [hawaiipublicschools.org/2025-summer-learning-2025](https://hawaiipublicschools.org/2025-summer-learning-2025).

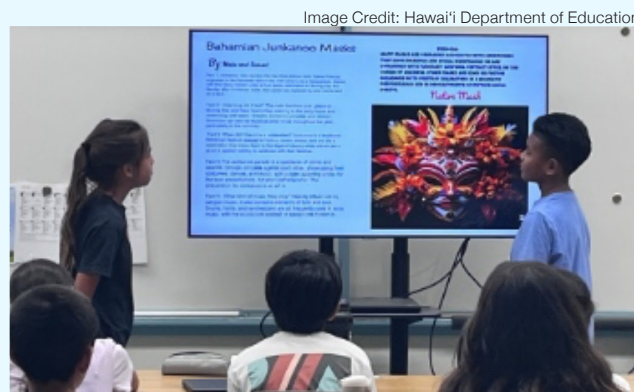


Image Credit: Hawai'i Department of Education

### SUMMER LEARNING 2025

Summer Learning 2025 starts the first week of June! Summer Learning provides an extended learning

## IN THE COMMUNITY

### Complete the FAFSA Application for Federal Student Aid



Image Credit: Federal Student Aid, US Government

College-bound and currently enrolled college students can use the 2025–26 Free Application for Federal Student Aid (FAFSA®) form ([studentaid.gov/h/apply-for-aid/fafsa](https://studentaid.gov/h/apply-for-aid/fafsa)) to apply for aid for July 1, 2025, to June 30, 2026.

The Free Application for Federal Student Aid (FAFSA) form allows students to be considered for federal student aid. States and colleges also use FAFSA information to award their own grants, scholarships, and loans. Aid is limited so students are recommended to apply as early as possible. Students must also check with the school they are attending because each college and career/trade school may have their own deadline. You can visit the state higher education agency's website for the most up-to-date state deadline at [studentaid.gov/apply-for-aid/fafsa/fafsa-deadlines](https://studentaid.gov/apply-for-aid/fafsa/fafsa-deadlines).

The financial aid office at a student's college or career school determines how much aid you are eligible to receive based on basic eligibility criteria for federal

student aid. Your eligibility depends on your Student Aid Index (SAI), your year in school, your enrollment status, and the cost of attendance at the school you will be attending.

This is how they do it:

- The financial aid staff starts by determining your cost of attendance (COA) at that school ([studentaid.gov/complete-aid-process/how-calculated#cost-of-attendance](https://studentaid.gov/complete-aid-process/how-calculated#cost-of-attendance)).
- They then review your SAI ([studentaid.gov/complete-aid-process/how-calculated#sai](https://studentaid.gov/complete-aid-process/how-calculated#sai)).
- They subtract your SAI from your COA to determine the amount of your financial need and how much need-based aid you can get ([studentaid.gov/complete-aid-process/how-calculated#need-based](https://studentaid.gov/complete-aid-process/how-calculated#need-based)).

For more information, please visit [studentaid.gov](https://studentaid.gov).

Image Credit: City and County of Honolulu Department of Design and Construction

### 'ĀINA HAINA



### STORM DRAINAGE IMPROVEMENT



The City and County of Honolulu will begin a storm drainage improvement project in the vicinity of Ahuwale Street in 'Āina Haina starting May 5, 2025. The project is expected to take approximately 16 months to complete. Work will be conducted on Monday through Friday (excluding holidays), from 7:00 a.m. to 3:30 p.m.

The project involves improving the existing Ahuwale ditch, which will include demolition, excavation, grading and compacting, concrete forming and pouring, and shotcrete application. Traffic will not be impacted but motorists and pedestrians are advised to follow all posted construction signs and exercise caution when traveling through the area.

For more information, please contact the City and County of Honolulu at (808) 768-8400.

# YOUR CONCERNS

## WEEKDAY CLOSURE OF KOKO HEAD SHOOTING COMPLEX

The City and County of Honolulu has announced that the Koko Head Shooting Complex will be closed for three weeks in June. The complex will only be closed on weekdays starting Monday, June 2, to Monday, June 23, 2025.

The closure will allow the Department of Parks and Recreation to survey portions of the 20-acre property for long-term safety improvements to the facility. The following are expected to begin in 2028:

- Additional handwashing stations
- A replacement wall between pistol and rifle ranges
- New stairwell from the parking lot to the rifle range
- Improved backstops for silhouette and rifle ranges
- Lead reclamation for all backstops

Weekend access will remain open for archery and firearm ranges during the regular weekend schedules.

The reservation system for the pistol and rifle ranges will remain in operation. Reservations can be made at [pros10.hnl.info](https://pros10.hnl.info). For more information, please visit [honolulu.gov/dpr/koko-head-shooting-complex](https://honolulu.gov/dpr/koko-head-shooting-complex).



Image Credit: Honolulu Department of Parks and Recreation

## HAWAII RESIDENTS ENCOURAGED TO REVIEW INSURANCE POLICIES IN PREPARATION FOR HURRICANE SEASON

The Hawai'i Department of Commerce and Consumer Affairs (Insurance Division) has encouraged homeowners to review their insurance policies in anticipation of hurricane season which starts on June 1.

Many standard insurance policies do not cover hurricane and flood damage. Hurricane insurance and damage caused by floods are typically covered under a separate insurance policy.

"Understanding what your insurance covers before a disaster hits is crucial," said Acting Insurance Commissioner Jerry Bump. "It ensures you have enough coverage to rebuild or replace what you've lost. For example, if you've recently renovated your home, that likely increased its value. And even without upgrades, rising costs for materials and labor can still affect your coverage needs."

Homeowners should contact their agent or insurance company regarding their specific policy. For more information on flood and hurricane insurance and other resources, please visit the DCCA Insurance Division's website at [cca.hawaii.gov/ins/resources](https://cca.hawaii.gov/ins/resources).

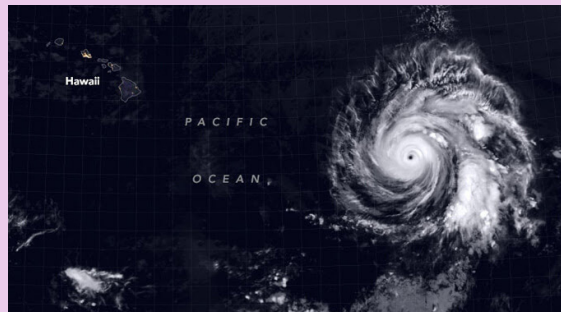


Image Credit: University of Hawai'i



FROM THE OFFICE OF  
**SENATOR STANLEY CHANG**

Hawai'i State Capitol, Room 226  
415 South Beretania Street  
Honolulu, Hawai'i 96813